

# BAUHOME SERIES

Imported from Spain, our **BAUHOME** series is our latest cement look tile inspired by 70s pop colours. Available in a 200x200mm format, **BAUHOME** is perfect for either a cohesive colour scheme or experimentation with patterns.



**PRODUCT TYPE:** Glazed Porcelain

**COLOURS:** Weiss, Grau, Minze, Grun, Rose, Terrakotta, Blau, Glacier and Schwarz

**SIZES:** 200x200mm  
Non-Rectified Edges

**FINISHES/USAGE:** Matt/Wall and Floors

**AESTHETIC QUALITIES:** Inspired by 70s pop colour in cement look finish

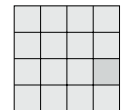
**ORIGIN:** Spain

**TECHNICAL DATA:** P4 Pendulum slip rating  
More technical data on last page

**CERTIFICATIONS:**



**VARIATION:**

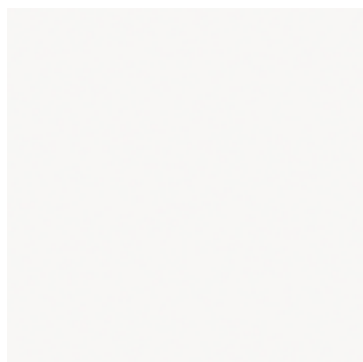


V1

Variation is an inherent property of tiles and stone. Sizes are nominal and may include a joint.

# BAUHOME SERIES

## PRODUCT INFORMATION



**Weiss**

Matt

200x200mm



**Grau**

Matt

200x200mm



**Minze**

Matt

200x200mm



**Grun**

Matt

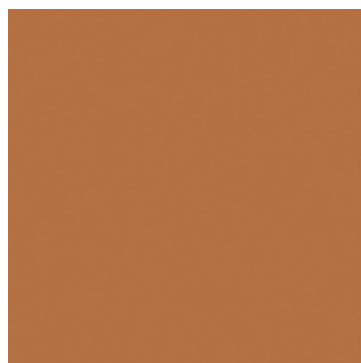
200x200mm



**Rose**

Matt

200x200mm



**Terrakotta**

Matt

200x200mm



Variation is an inherent property of tiles and stone. Sizes are nominal and may include a joint.

# BAUHOME SERIES

## PRODUCT INFORMATION



**Blau**

Matt

200x200mm



**Glacier**

Matt

200x200mm



**Schwarz**

Matt

200x200mm



# BAUHOME SERIES








## LIFESTYLE IMAGES



Variation is an inherent property of tiles and stone. Sizes are nominal and may include a joint.

# BAUHOME SERIES

## TECHNICAL DATA

	technical characteristics	test method	result
	water absorption	EN ISO 10545-3	> 0.5 % (BIa)
	modulus of rupture	EN ISO 10545-4	> 35 N/mm <sup>2</sup>
	surface quality	EN ISO 10545-2	complies
	breaking strength	EN ISO 10545-4	> 1300 N
	scratch hardness	EN 101	7
	chemical resistance	EN ISO 10545-13	GLA   GHB   GA
	stain resistance	EN ISO 10545-14	5

# BAUHOME SERIES

## GREEN CERTIFICATIONS



US GREEN BUILDING COUNCIL, the association of top players working to transform the building market towards sustainability and to build liveable communities. GBC US members promote environmental, economic and social responsibility, innovating buildings in terms of engineering, design, manufacturing and use.



BREEAM is an assessment undertaken by independent licensed assessors using scientifically-based sustainability metrics and indices which cover a range of environmental issues. Its categories evaluate energy and water use, health and wellbeing, pollution, transport, materials, waste, ecology and management processes.



Spain Green Building Council is the first national non-profit association of leading companies in the built environment industry that work together to promote environmentally responsible, profitable and healthy cities and buildings for the people who live or work in them.